

# Flexi-Glide for SpaceArm

The trend for larger and larger computer monitors in the workplace increases the challenge of providing employees with a safe and comfortable working environment.

Never before has it been so difficult to keep monitors seamlessly aligned whilst maintaining the correct viewing distance and reach. Both factors critical for good eye health and concentration.

Adapt Deutschland, the manufacturer of one of the most comprehensive monitor arm mounting systems available today, has risen to this challenge with their Flexi-Glide rail for SpaceArm.

Designed specifically to meet the needs of clients who require two monitors mounted side-by-side, Flexi-Glide allows maximum flexibility over viewing distance, and working depth, with no compromise on monitor alignment.

And, as with all Adapt products, it is future-proofed and backed by a lifetime warranty to serve those needs for many years to come.



## Key Features:

- Align dual monitors side-by-side whilst maintaining required viewing distance
- Can be used on quad SpaceArm configurations
- Quick and easy to attach to SpaceArm
- Locking feature provided
- Quick Connect VESA mount
- Finish available in Black with Platinum, Black or White pivot neck at the rear



Future-proof  
designs



Customised  
solutions



Customer  
support



Product  
continuity

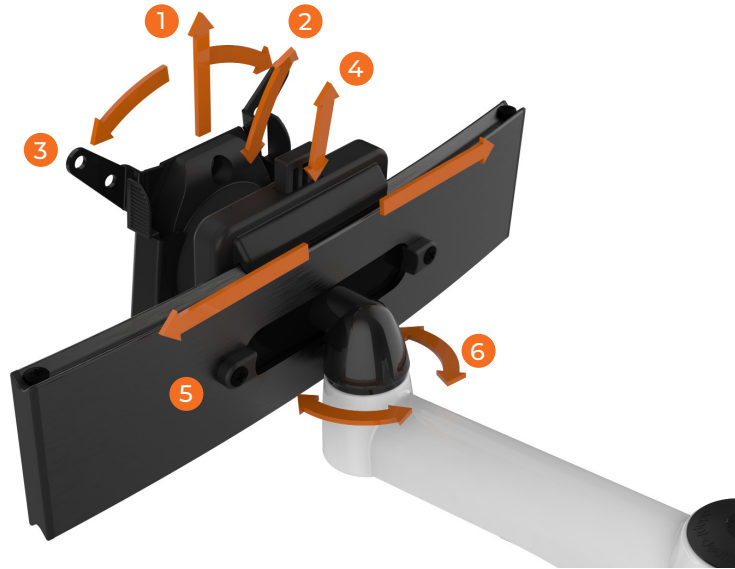


Lifetime  
guarantee



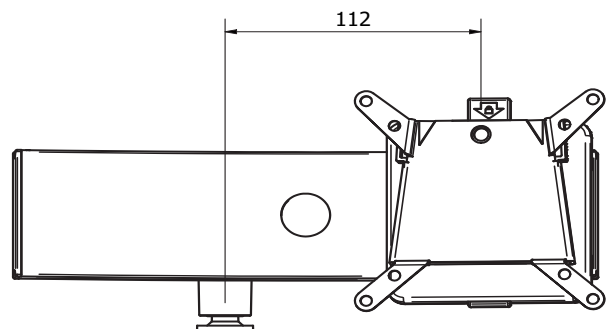
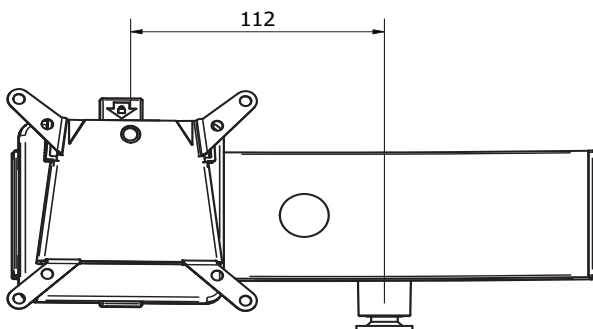
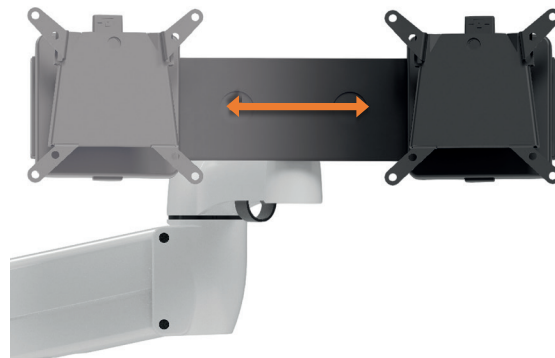
Sustainable  
solutions

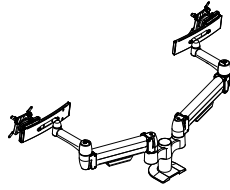
Simple to install or upgrade, Flexi-Glide replaces the standard SpaceArm VESA mount and pivot neck with the turn of just one screw.



- 1 The VESA mount disconnects so the monitor can be quickly and easily fitted or removed.
- 2 Tilt – up and down.
- 3 Rotate - 360 degrees.
- 4 A locking button secures the monitor once the desired left to right position has been reached.
- 5 Slide - left and right.
- 6 Swivel - up to 360 degrees.

## Specifications

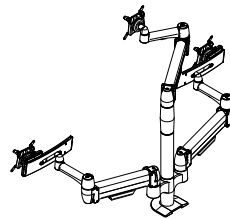




Colour:     
BLK PLT WHT

### Double Monitor Arm with Flexi-Glide

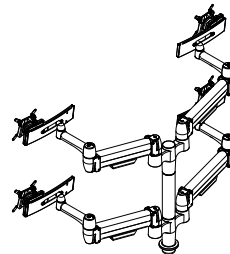
Product Code	Description
2 x SMM11QC	Flexi-Glide for SpaceArm
The above to be ordered with arm specification below:	
SA02NK-AC	Standard Double SpaceArm, no Knuckle, Above Desk Clamp
SA02NK-BT	Standard Double SpaceArm, no Knuckle, Bolt Through
SA02NK-CC	Standard Double SpaceArm, no Knuckle, C-Clamp
SA02NK-GM	Standard Double SpaceArm, no Knuckle, Grommet Mount
SA02NK-CL	Standard Double SpaceArm, no Knuckle, Large C-Clamp
SA02NK-MCC	Standard Double SpaceArm, no Knuckle, Mini Clamp
SA02NK-MCL	Standard Double SpaceArm, no Knuckle, Mini CL-Clamp



Colour:     
BLK PLT WHT

### 2 Tier Triple Monitor Arm with Flexi-Glide

Product Code	Description
2 x SMM11QC	Flexi-Glide for SpaceArm
The above to be ordered with arm specification below:	
SA12NK-BT	2 Tier, Triple SpaceArm, No Knuckle, Bolt Through
SA12NK-CL	2 Tier, Triple SpaceArm, No Knuckle, Large C-Clamp



Colour:     
BLK PLT WHT

### 2 Tier SpaceArm with Flexi-Glide

Product Code	Description
4 x SMM11QC	Flexi-Glide for SpaceArm
The above to be ordered with arm specification below:	
SA22NK-BT	2 Tier, Standard Double, No Knuckle, Bolt Through
SA22NK-CL	2 Tier, Standard Double, Direct Mount, Large C-Clamp





Create workspaces that work.

Contact Adapt Deutschland GmbH for more information,  
pricing and samples.

+49 (0) 2151 985 190

[infode@adapt-global.com](mailto:infode@adapt-global.com)

[www.adapt-deutschland.eu](http://www.adapt-deutschland.eu)