

Mesh+

Cable Mesh+ is specifically designed for height-adjustable desking applications, concealing and organising large amounts of cabling from your cable basket or worksurface to the floor.

The top bracket can be screwed into the work surface or attached to our Cable Baskets. Cable Mesh is suitable for all standard height-adjustable desking.

It features internal cable segregation, cable tie loops, and a weighted base with a neoprene pad that grips the floor, preventing damage.



Future-proof
designs



Customised
solutions



Customer
support



Product
continuity

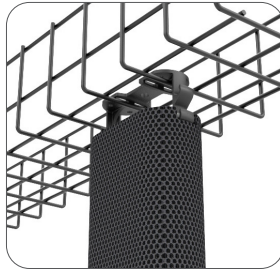
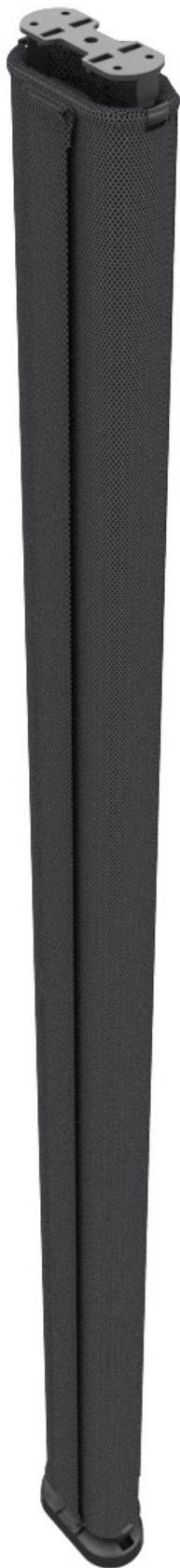


Lifetime
guarantee



Sustainable
solutions

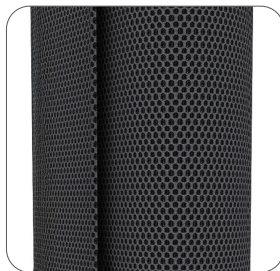
Cable Mesh+ has several unique and user-friendly features:



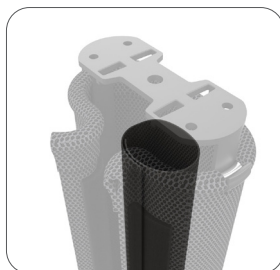
A top mounting clip that can be screwed under the worksurface or hooked through a cable basket. The mounting clip also features several hooks that allow for fine-tuning of the length and mounting position, as well as cable tie loops for securing cables.



Aluminium rings stitched into the fabric securely connect the top and bottom mounting clips, helping to maintain the shape and making it easier to insert or remove cables.



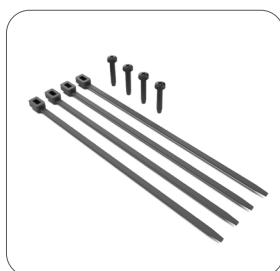
The hi-tech mesh fabric not only hides cables from view, but is lightweight, tough, breathable, and has 4-way stretch. The mesh fabric has a full-length Velcro closure. If damage occurs, the fabric can be replaced without the need to buy an entirely new product.



A full-length internal cable segregation pocket for power and data cables. This pocket is simple to use with a Velcro closure that runs from top to bottom.

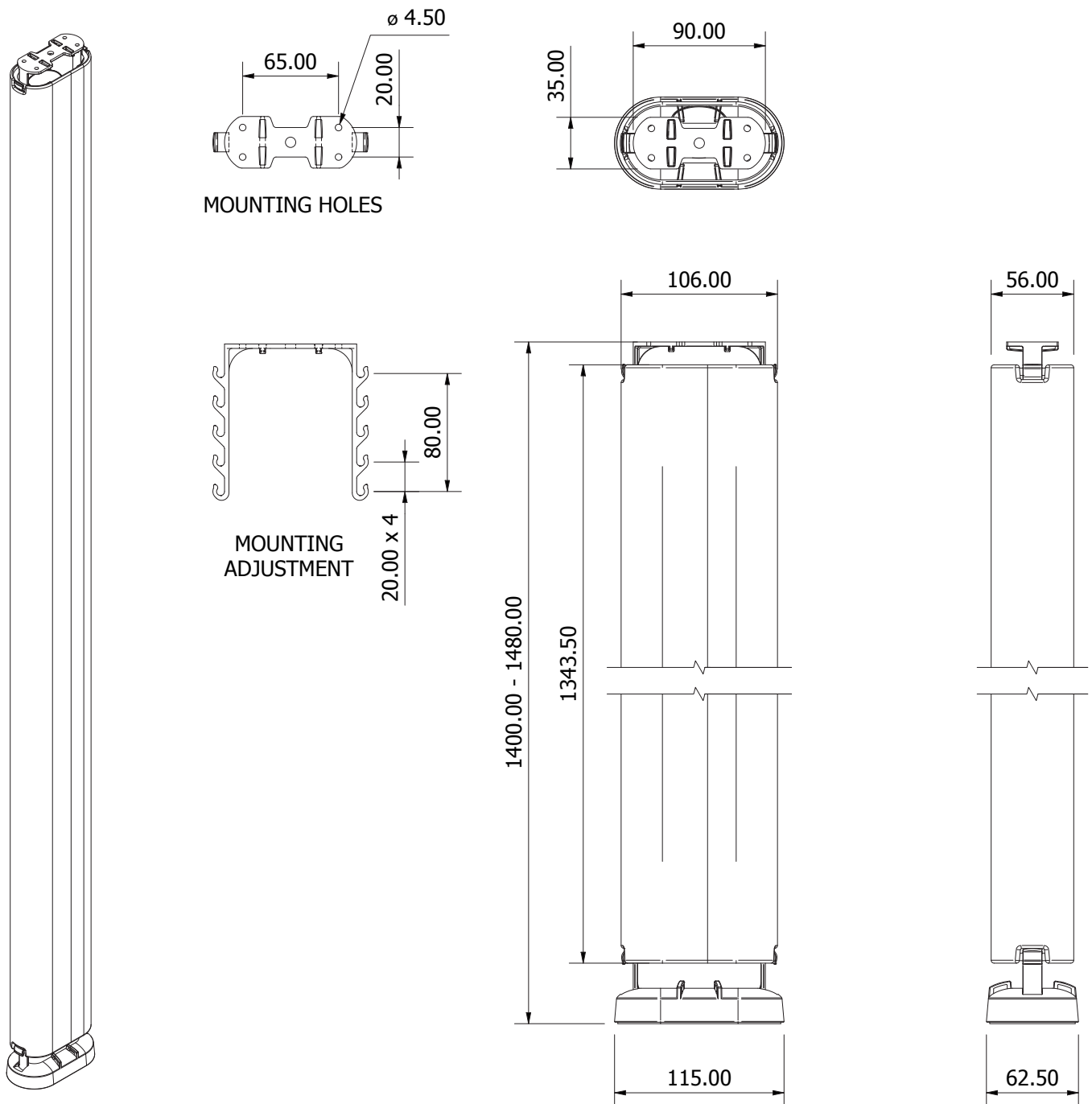


At the bottom of Cable Mesh+ is a heavily weighted base that features a soft and grippy pad on the underside, as well as several cable tie loops for securing cables in place.



Cable Mesh+ comes with fixing screws and cable ties in the box.

Technical Specification



Product Code	Description
CABM-371BK-FA	Cable Mesh+, Desk Mounted





Create workspaces that work.

Contact Adapt Deutschland GmbH for more information,
pricing and samples.

+49 (0) 2151 985 190

infode@adapt-global.com

www.adapt-deutschland.eu