

PC & Laptop Holders

Protect your computer

CPU holders lift your PC from the floor, protecting it from damage, static and dust build-up. This prevents clutter under the desk and extends the life of your computer.

The ergonomic design of our CPU holders allows you to access the front and rear of the PC with ease. This reduces the risk of injury and saves valuable time. Adapt offers a selection of compact and unobtrusive CPU holders with a range of mounting and bracket options.



Future-proof
designs



Customised
solutions



Customer
support



Product
continuity



Lifetime
guarantee



Sustainable
solutions

Elevator

The Elevator CPU holder holds your PC safely under your desk, using a breathable mesh sling to prevent overheating and accommodate virtually any shape and size of PC.

Elevator is available with standard and telescopic tracks, enabling your PC to slide back and forth under the desk for easy access and servicing. There are also fixed mounting options and a wide range of customised mounting brackets.



Future-proof
designs



Customised
solutions



Customer
support



Product
continuity



Lifetime
guarantee

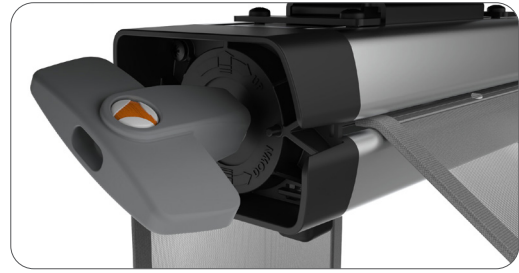


Sustainable
solutions

Elevator has several unique and user-friendly features:



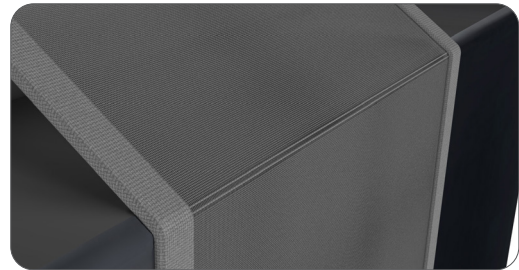
Rotating mounting plate



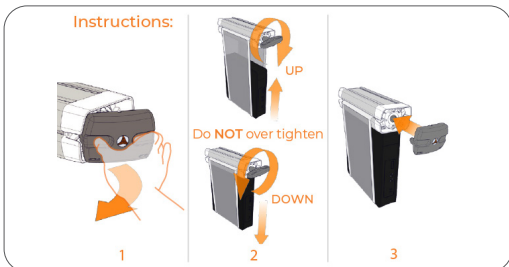
Ratchet winding system to raise the PC from the floor



Compact and unobtrusive



Breathable mesh fabric sling prevents the CPU from damage and overheating



Winding key and operating instructions.



PC secured in the sling by soft holding feet at the base of the elevator



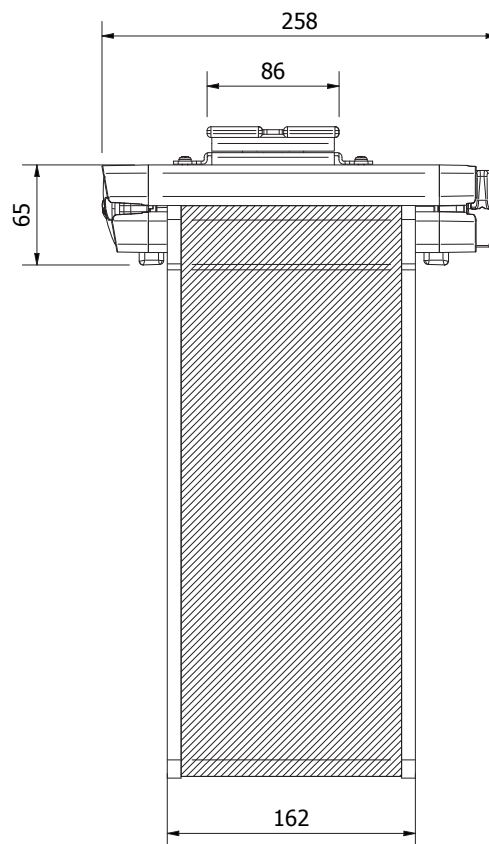
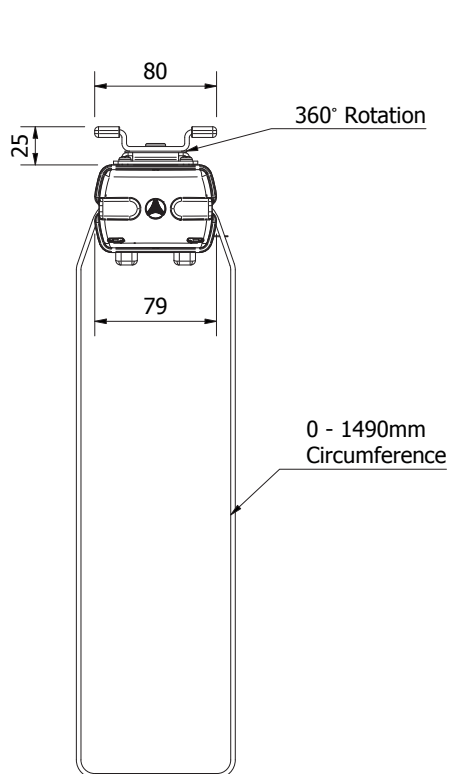
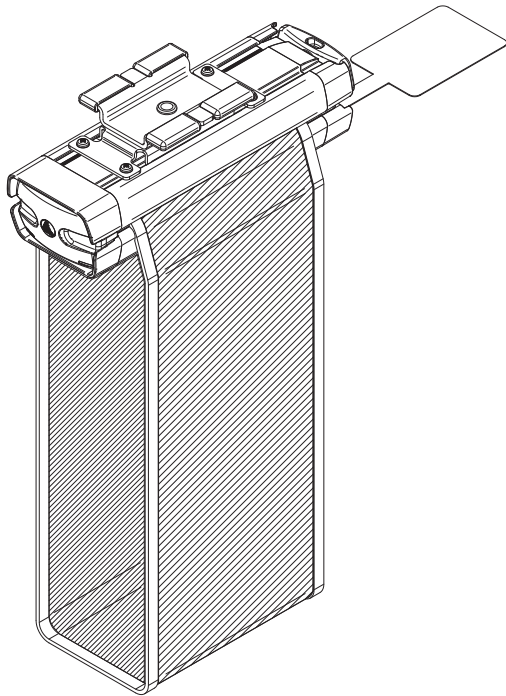
The Standard Track system enables a CPU holder to slide back and forth under your desk, allowing easy access for servicing etc.



The Telescopic Track benefits from the Standard Track features above. It also allows the PC to be extended out from under your desk, creating easy access for maintenance.

Technical Specifications

ELVTR01

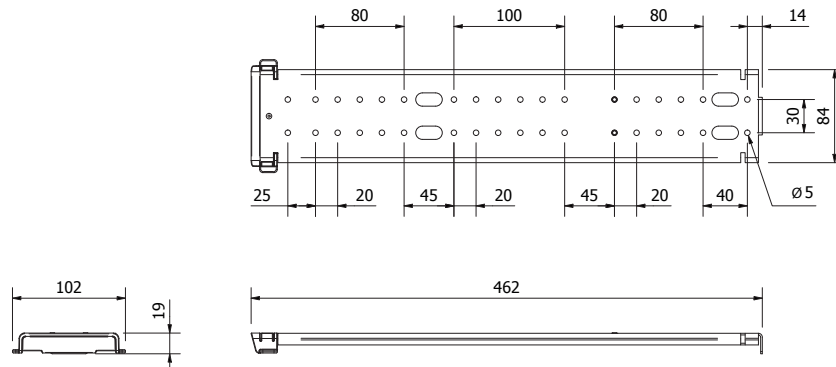
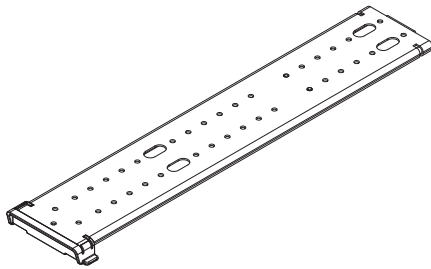


Product Code	Description
ELVTR01	Elevator CPU Holder with Rotate Plate

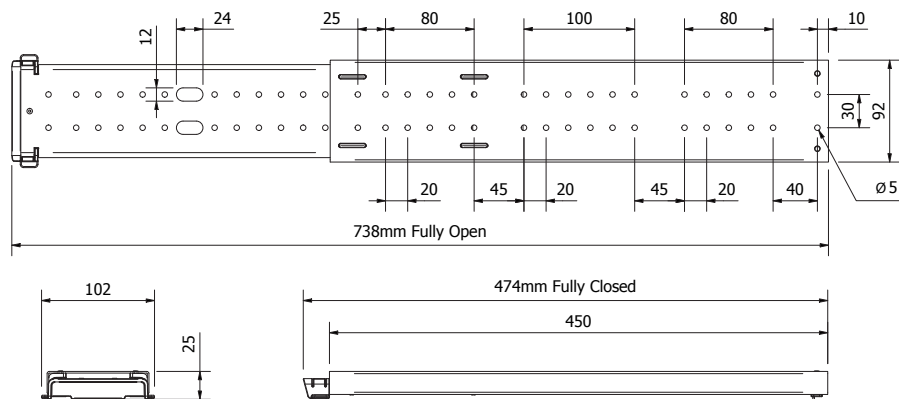
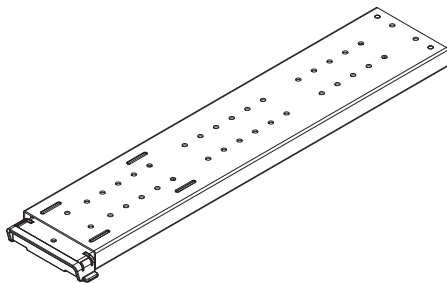


Technical Specifications

CPU-02



CPU-03

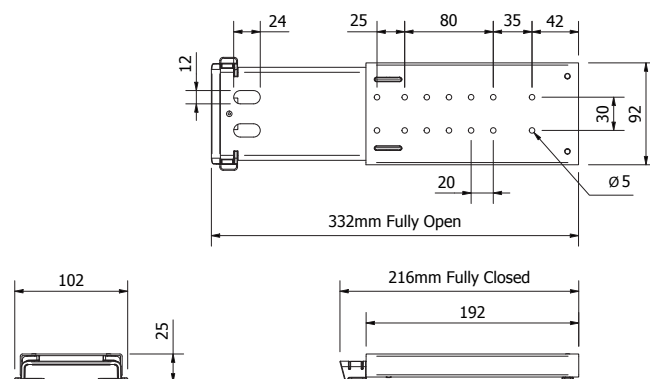
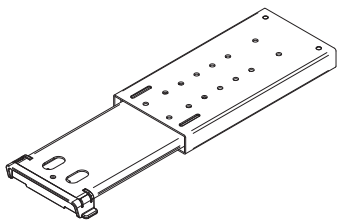


Product Code	Description
CPU-02	Single Track (only available in Black)
CPU-03	Telescopic Track (only available in Black)



CPU-04

For applications where structures under the worksurface prevent mounting a full Elevator Telescopic Track, Adapt is able to offer the Short Track. With a compact end-to-end dimension of just 220mm and all the other features of the full-size track, it is the ideal solution.



Product Code	Description
CPU-04	Short Telescopic Track (22cm)

Thin Client Holders

The Thin Client Holder is an ideal option for offices where space is at a premium. It lifts the PC from the desk, freeing up valuable work surface space and helping to keep the office tidy. It is available with two mount options, the VESA Mount and the Base Mount.

VESA Mount



Future-proof
designs



Customised
solutions



Customer
support



Product
continuity



Lifetime
guarantee

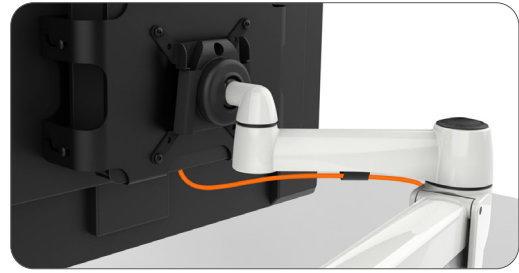


Sustainable
solutions

VESA Mount Client Holder has several unique and user-friendly features:



Lifts your PC up from the floor and desk surface



Cables pass freely through the VESA mounted holder and monitor arm



CPU holder is fixed in one secure position



No restriction of movement to the monitor arm



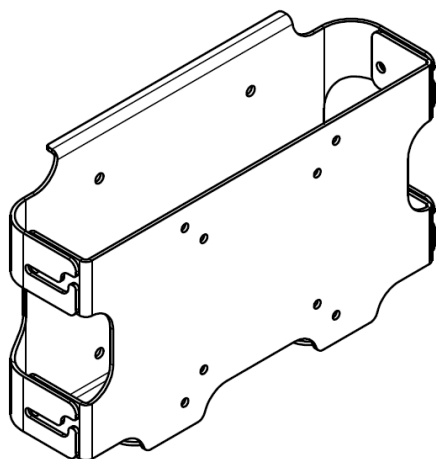
Extremely lightweight & Ergonomic design



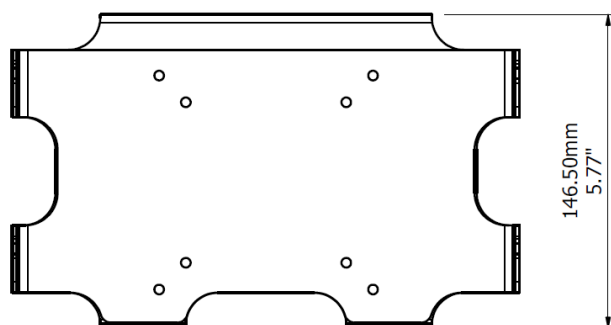
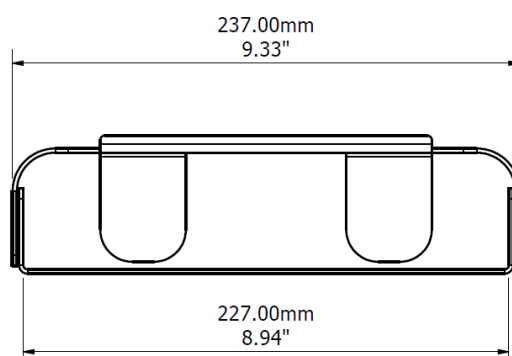
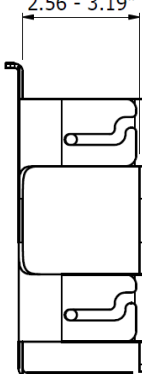
Adjustable to fit various PCs

Technical Specifications

AACY-116



Adjustable
65mm - 81mm
2.56 - 3.19"



Product Code	Description
AACY-116BK	Thin Client Holder - VESA Mounted in Black

Thin Client Holders

Base Mount



Future-proof
designs



Customised
solutions



Customer
support



Product
continuity



Lifetime
guarantee

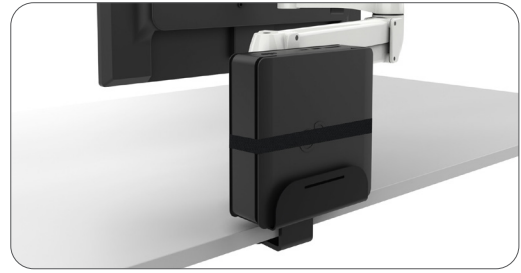


Sustainable
solutions

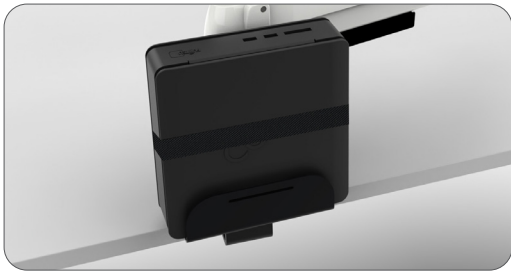
Base Client Holder has several unique and user-friendly features:



Optional security straps reduce the risk of damage to your PC



Flexibility to rotate the CPU holder around your monitor arm



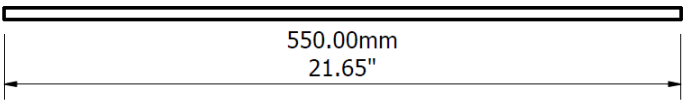
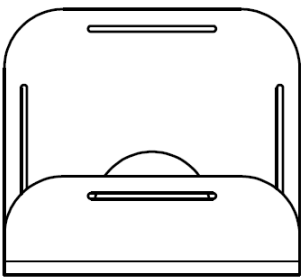
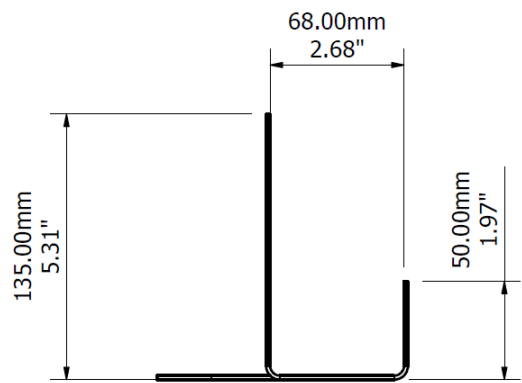
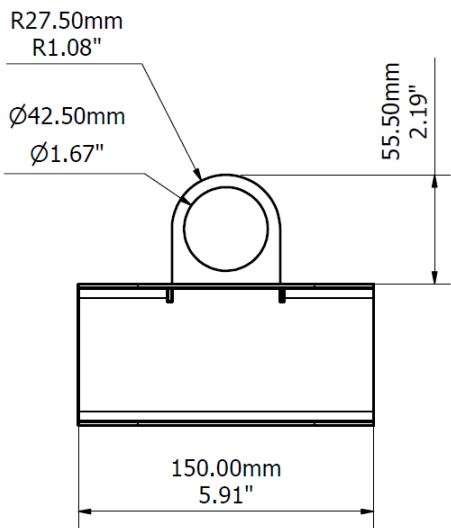
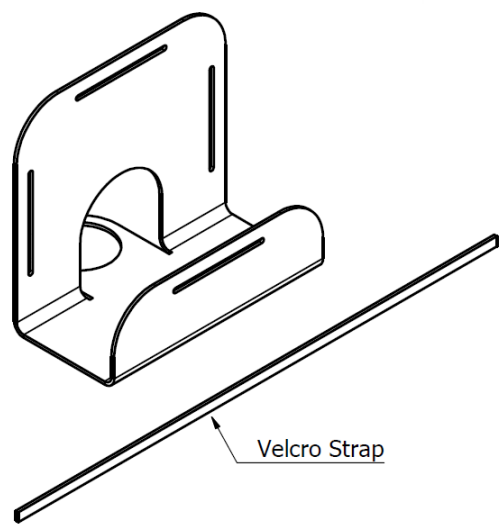
CPU holder is fixed in one secure position



PC is easily accessible

Technical Specifications

CPUH-129



Product Code	Description
CPUH-129BK	Thin Client Holder - Base Mounted in Black



Laptop Stand

The Ergo-Boost Laptop Stand from Adapt offers the greatest possible flexibility, whether working from home, the office or on the move.

Eight incremental height adjustment steps allow you to achieve the optimum viewing position. When combined with a wireless keyboard and mouse, the Laptop Stand provides the ideal basis for ergonomic working almost anywhere.

Constructed with a gently rounded, lightweight, hard anodised aluminium frame, the Laptop Stand can be folded flat and slipped easily inside a handbag or briefcase.

Soft TPE pads bonded to the aluminium provide exceptional stability and grip whilst preventing scratching or damage to the laptop or work surface.

Another great feature of the Ergo-Boost Laptop Stand is that when raised, it allows air to circulate around the laptop, preventing overheating and damage.



Future-proof
designs



Customised
solutions



Customer
support



Product
continuity



Lifetime
guarantee

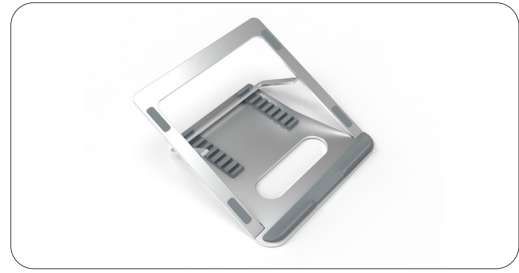


Sustainable
solutions

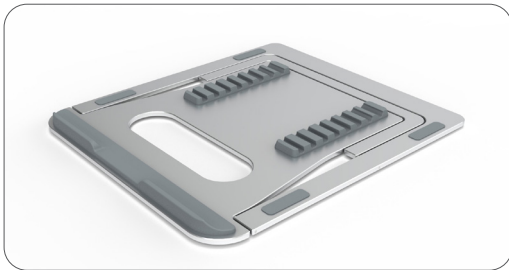
Laptop Holder has several unique and user-friendly features:



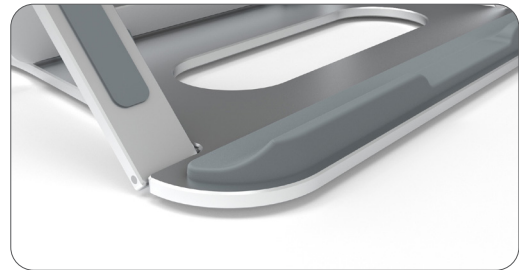
Eight incremental height adjustment steps



Rounded, lightweight, hard anodised aluminium frame



Can be folded flat

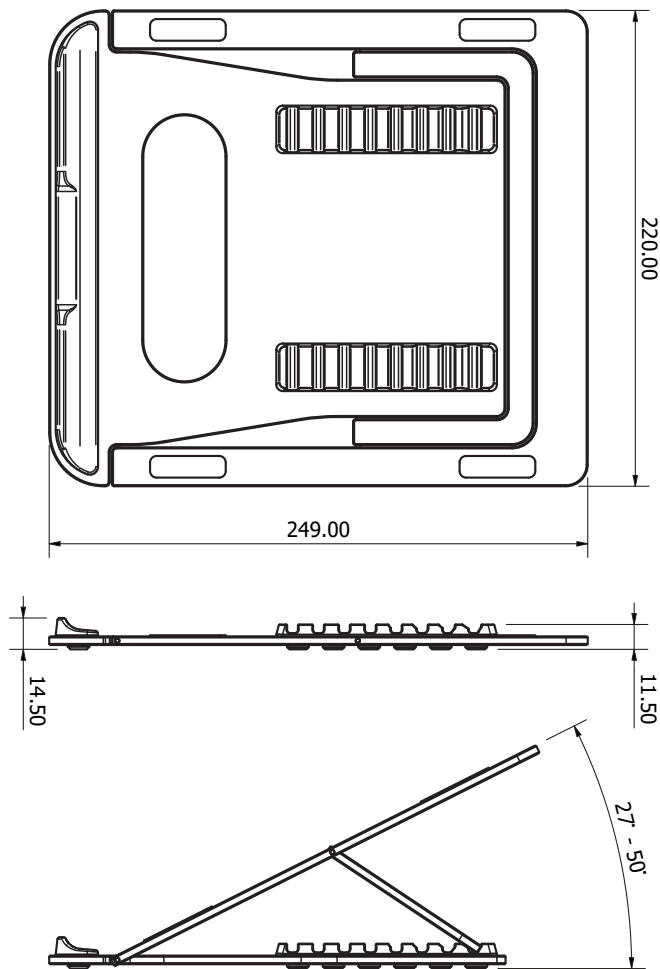


Soft TPE pads bonded to the aluminium provide exceptional stability



Allows air to circulate

Technical Specifications



- **Adjustment Angles** - 27, 32, 36, 40, 44, 46, 48 and 50 Degrees from horizontal.
- **Construction** - 4mm Aluminium frame with chamfered and rounded edges. Clear, textured, hard anodised finish. Grey TPE pads on the upper and lower faces of the frame.
- **Dimensions** - 220 Wide x 250 Long x 14.5mm Thick.
- **Weight** - 530 Grams (unpackaged).

Product Code	Description
LAPT-101SL	Ergo-Boost, Laptop Stand, Silver/Grey



Universal Holder

At Adapt Deutschland, we listen to our customers...

So, when we were asked to provide a solution for storing laptops, notebooks, tablets and writing pads, we thought we would investigate the opportunity.

With worktop space at a premium and desk sharing common place, we all need neat solutions to improve our working environment. Simple products that make life just that bit easier, more comfortable, and convenient.

The Adapt team have always taken a holistic approach to the workplace, wherever that may be for each individual. So, if we can improve those workplaces by providing practical solutions which are functional, look good, feel good and have a minimal impact on the environment, then we are delighted to add them to our range.



Future-proof
designs



Customised
solutions



Customer
support



Product
continuity



Lifetime
guarantee

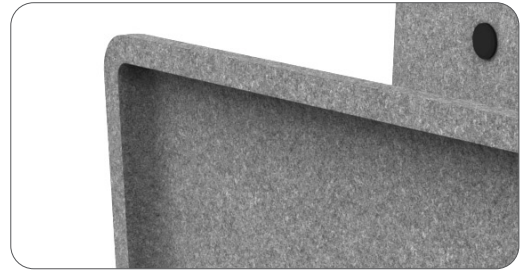


Sustainable
solutions

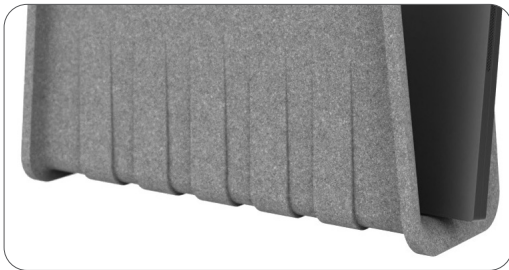
Key Features and Benefits



The Universal Holder has been designed to hold a variety of items from laptops to tablets to note pads and personal items.



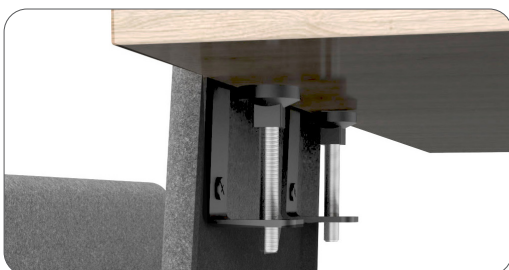
Formed from PET synthetic felt, with a minimum of 50% recycled content, the Universal Holder is not only kind to items that scratch easily, but it is also kind to the environment.



During the forming process, heat and extreme pressure are used to create a dense material that is exceptionally strong for its weight, virtually unbreakable and yet still soft to the touch.



The Universal Holder can be mounted to the front or side of almost any surface, even with support frames at the edge, due to the extra-wide clamps that are concealed within the outer shell.

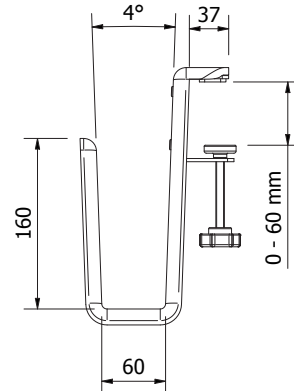
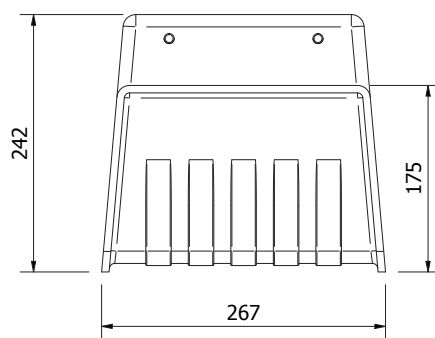
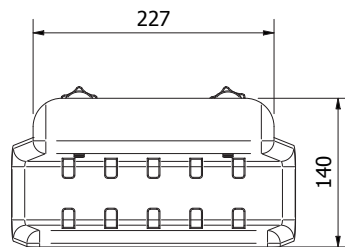
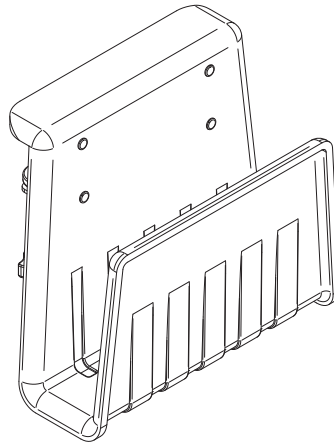


The integrated steel C-clamps provide a secure mounting solution, do not require tools to mount, and have soft neoprene pads inside to protect work surfaces.



PET synthetic felt is unique in that it can be produced in a wide range of colours, does not scratch easily, and if it does, the colour goes right through the material so that it won't show, it shrugs off dirt and won't break or dent if dropped or hit.

Technical Specifications



- **Packaging** - Single item – STOR-229DG
- **Packaging**- Cartons of five pieces – STOR-230DG
- **Finish** - Dark grey mottled colour
- **Available in other colours** - MOQs apply
- **Materials** -PET, Steel





Create workspaces that work.

Contact Adapt Deutschland GmbH for more information,
pricing and samples.

+49 (0) 2151 985 190

infode@adapt-global.com

www.adapt-deutschland.eu